

AMERICAN RIVER COMMON FEATURES, NATOMAS LEVEE IMPROVEMENT PROJECT

REACH A – CONSTRUCTION UPDATE

Larissa Boland
Project Manager

Camden Smith
Senior Project Manager

Kylan Kegel
Technical Lead

Sacramento District
2023 Construction Season

www.natomaslevees.com



US Army Corps
of Engineers®





ARCF NATOMAS - AGENDA



- I. Introductions
- II. Site Preparation activities
- III. 2023 Construction Map & Future Construction Activities
- IV. Impacts to your area
- V. Contact Us
- VI. Open discussion



Reach A Overhead Utility Relocations, Site Preparations, 2022



PROJECT PARTNERS



FEDERAL GOVERNMENT



**U.S. Army Corps
of Engineers**
Sacramento District

STATE GOVERNMENT



Central Valley
Flood Protection
Board



Department of
Water
Resources

LOCAL GOVERNMENT





SITE PREPARATIONS

4

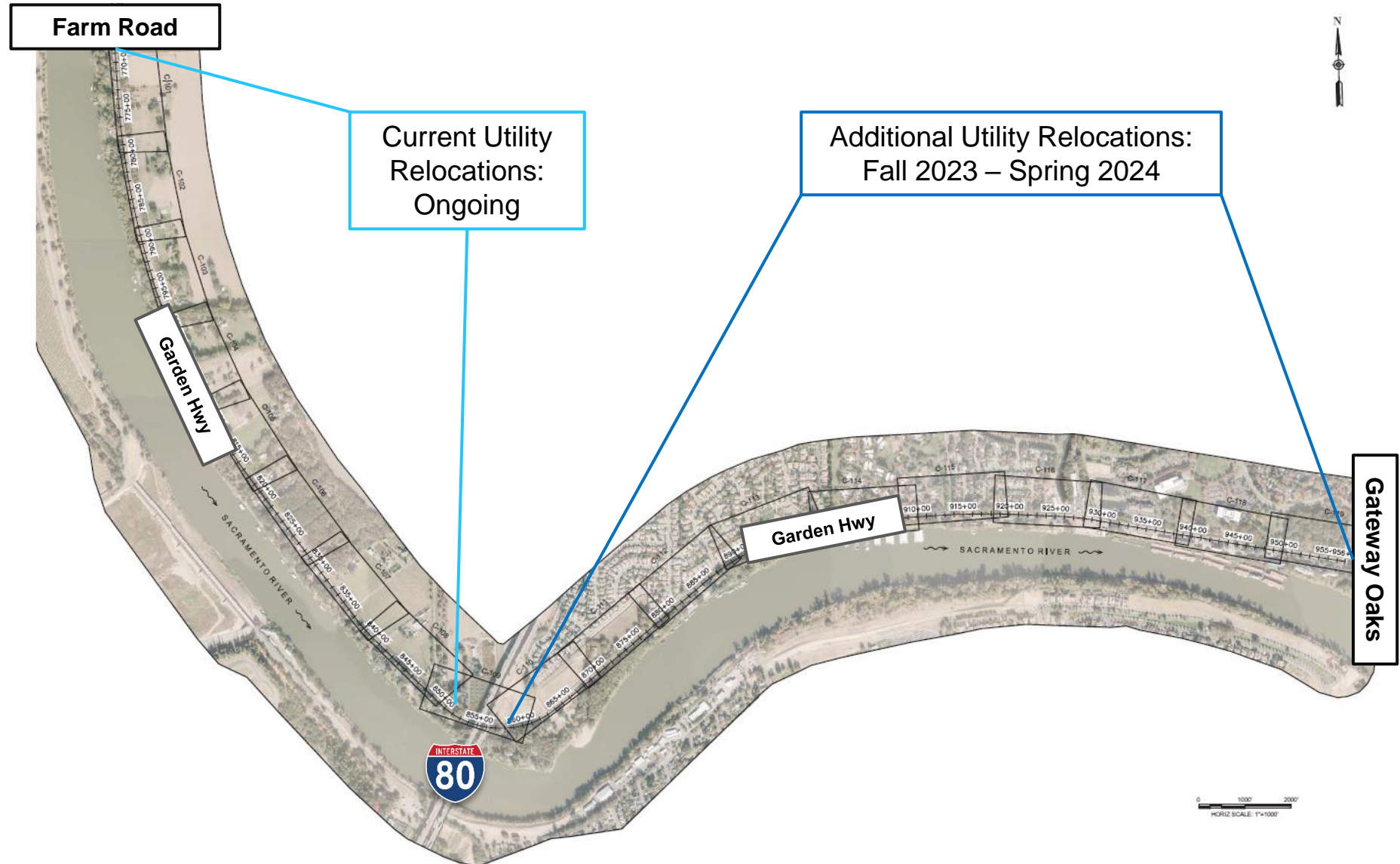


Tree Removal:
Ongoing

Utility Relocations:
Ongoing. Anticipated
completion Spring
2024

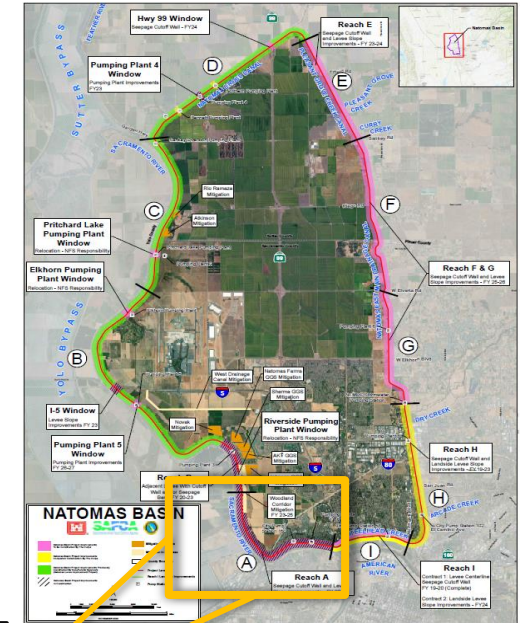
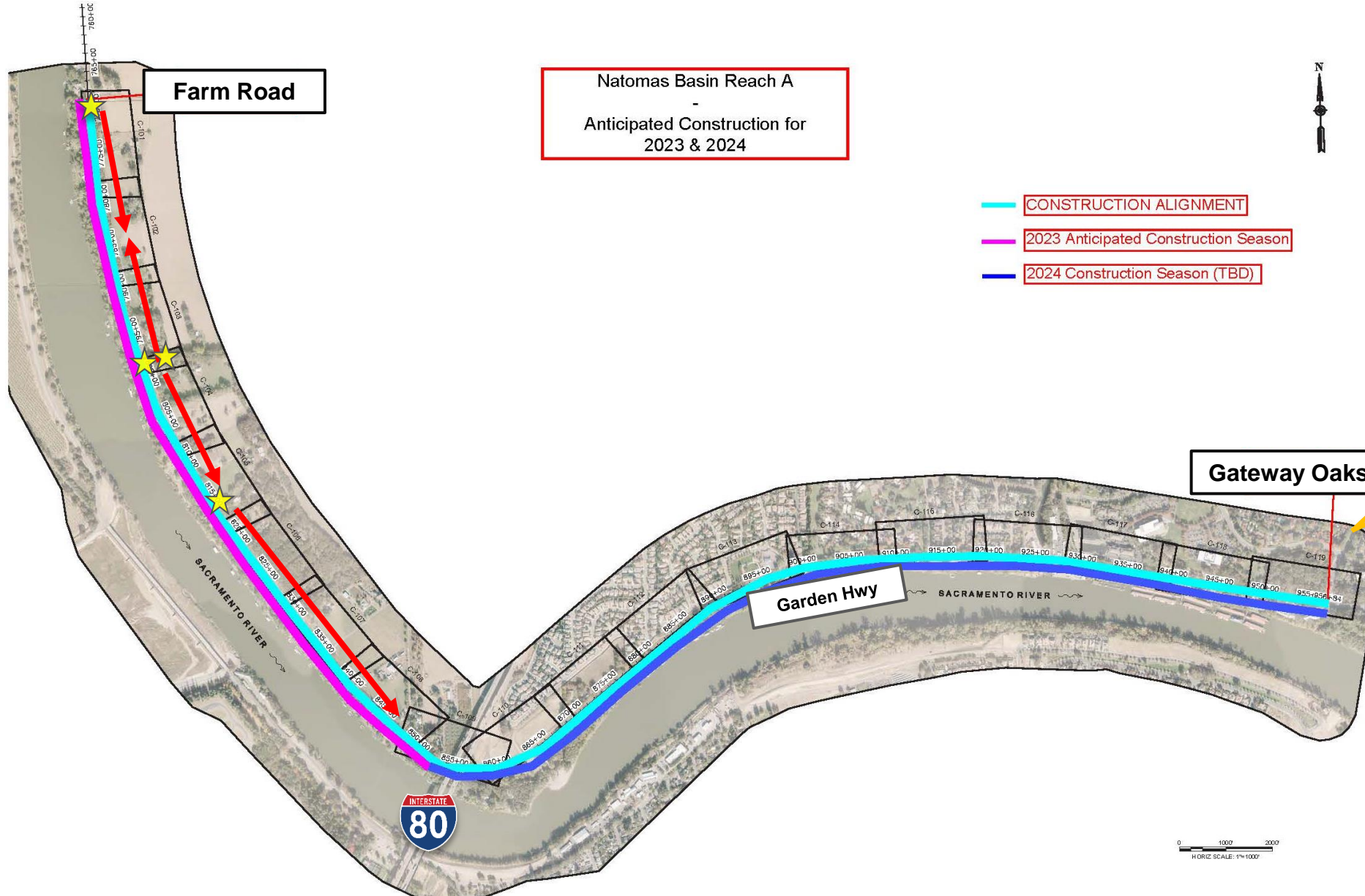
Construction Limit
Borders & Fencing:
Spring 2023

Additional
Preparations:
Clearing & grubbing





REACH A – ANTICIPATED CONSTRUCTION





IMPACTS



TRAFFIC IMPACTS

Garden Highway Lane Reductions

- Some construction will require temporary lane reductions
- Traffic plan developed and reviewed by City of Sacramento

ACCESS ISSUES

Temporary access ramps

ENVIRONMENTAL IMPACTS

Next phase of tree removal will commence in the Winter 2022 to Spring 2023

CONSTRUCTION IMPACTS

Dust, noise, & vibration



CONTACT INFORMATION



GET THE LATEST NATOMAS UPDATES HERE



WWW.NATOMASLEVEES.COM



/USACESACRAMENTO



/SACRAMENTODISTRICT

EMAIL spk-pao@usace.army.mil

PHONE 916-557-5100

**Subscribe for Construction
& Traffic email updates**



**Construction Work Inquiry &
Concern Submission Form**



*Email USACE Public Affairs Team to
be added to the construction updates*



OPEN DISCUSSION

Thank you for attending this Reach A
Project Update Public Workshop.

This concludes our briefing.

